

## Chapter 49: Adding “Tails” for Sidewall Overhangs

### Most Common Mistakes:

1. Adding “tails” to end trusses when building has endwall overhangs.
2. Not realizing how simple it is.

In some cases (usually due to shipping issues on wide span trusses), buildings with sidewall overhangs will have trusses delivered without “tails”.

For endwall trusses, a 2x6 is added to truss face. See **Figure 49-1**.

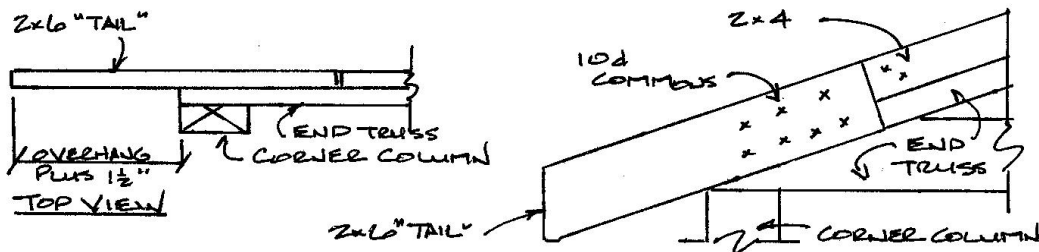


Figure 49-1

For sidewalls, other than the end, a 2x6 is added to each column side to support fascia board. See **Figure 49-2**.

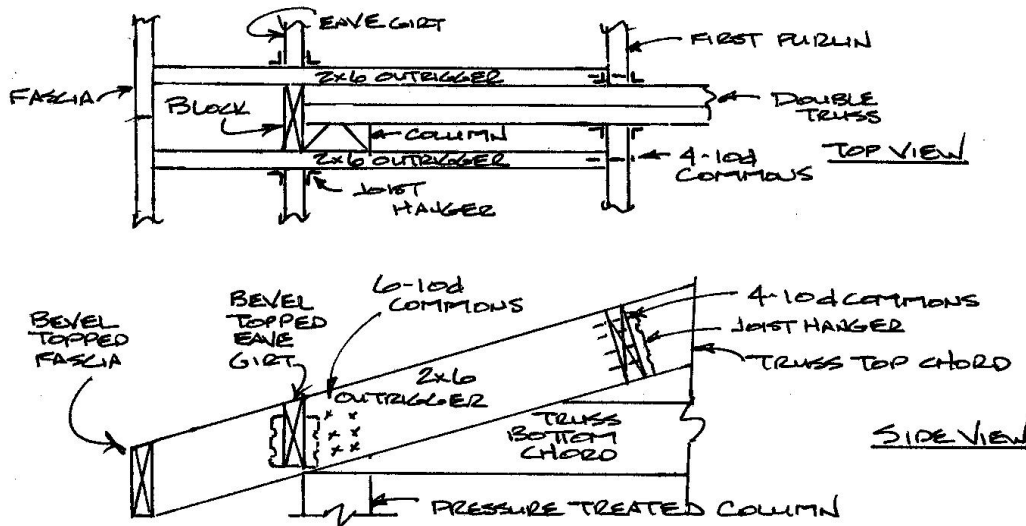


Figure 49-2